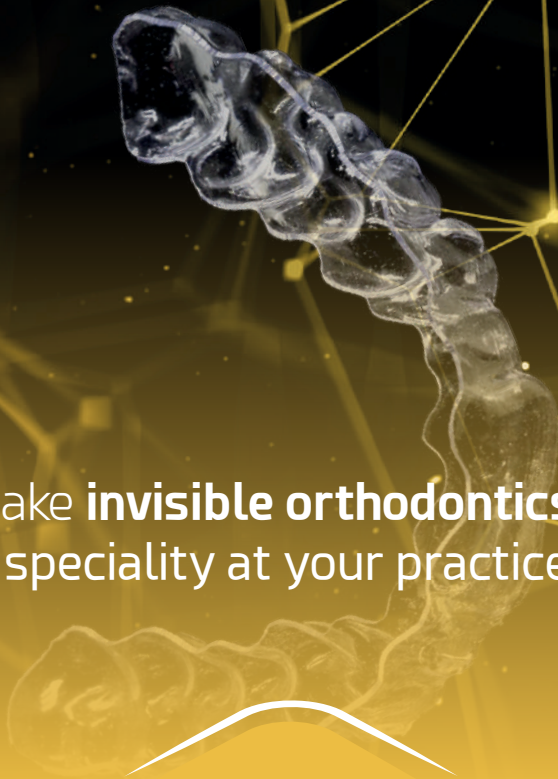


Real Aligner

Make **invisible orthodontics** a
speciality at your practice



RealAligner



Manufacturer:

RealAligner

Ziacor CAD-CAM SL

Calle Búhos, 2

28320 Pinto - Madrid - SPAIN

Tel.: +34 91 028 09 27

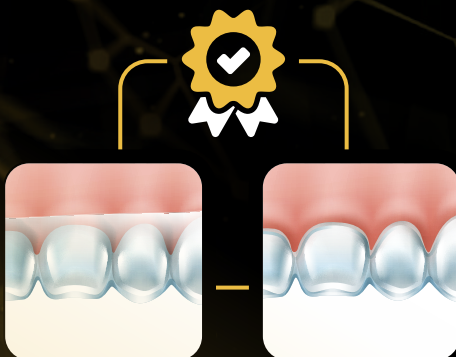
www.realaligner.com · info@realaligner.com

Let's bring invisible orthodontics to your practice

The *RealAligner* orthodontics system allows you to offer your patients a **personalised treatment plan**, with **ongoing support** and **assistance** from the **best orthodontics specialists** in the country.

Complete service for professional invisible orthodontic treatments

- Private area to monitor your cases
- Supervised by professional orthodontists
- Personalised plans with ongoing support
- Orthodontic training from leading orthodontic professionals
- Support for digitalising your dental practice



Thanks to its **premium plastic** and the option of **flat or scalloped edges**, *RealAligner* invisible orthodontics can be adapted to any clinical situation and to **each patient's individual needs**, thereby guaranteeing **predictable and successful treatment**

Why choose invisible orthodontics?

Invisible orthodontics **corrects the aesthetics and functionality of your bite** using a **simple, comfortable and highly aesthetic** process that offers significant advantages over conventional orthodontics.





Greater hygiene

As the aligner is removable, it is very easy to clean and does not require special instruments to get rid of any food debris or plaque build-up.



Aesthetics

The clear aligners fit each patient perfectly and are invisible to the naked eye.



A less painful procedure

Bite correction is progressive, minimising discomfort.



No impact on speech

Invisible orthodontic aligners have been designed in such a way as not to affect the palate or other speech organs, meaning that you will have perfect pronunciation even when wearing them.



Reduced chair time

From the very start, you will receive all the necessary aligners for the treatment, which the patient will use according to your instructions, thereby minimising visits to the practice.



Complete adaptability

Aligners for invisible orthodontic treatments are made to measure using durable and flexible materials, guaranteeing the best results for each case.

RealAligner, the future of invisible orthodontics is now here

We offer the **tools, materials** and **resources** you need to provide **high-quality** professional invisible orthodontic treatments.



An invisible orthodontic system designed with you and your patient in mind

Supervised by orthodontists



Each case is supervised by orthodontic professionals with many years of experience, who ensure that every treatment is clinically sound.

Ongoing training



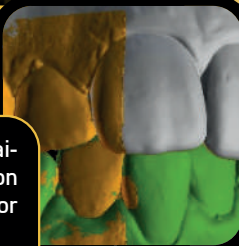
We offer ongoing training on invisible orthodontic techniques, tools and innovations given by the most influential KOLs in the industry.

Digitalisation support



We provide you with all the resources and tools necessary to digitalise your dental practice so that you can perform 100% digital invisible orthodontic treatments.

Detailed pre-treatment study



We will design a specific solution tailored to each patient's needs based on your detailed study of the patient prior to treatment.

Direct communication between the laboratory and your dental practice



Benefit from continuous guidance and support, from the moment impressions are taken to the time the very last aligner is removed.

Flexible and personalised plans



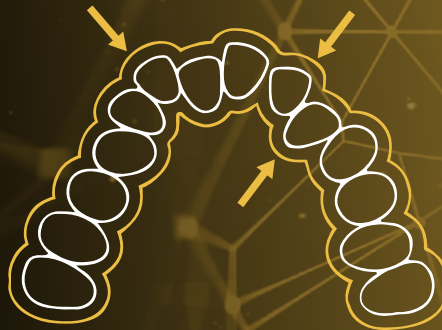
Choose the treatment plan that gives your patient exactly what they need.

How *RealAligner* works

RealAligner's invisible orthodontics treatment consists of **different stages**, each lasting around **two weeks**.

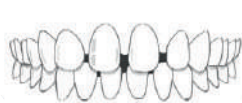


RealAligner aligners are designed to **maintain their fit and flexibility** throughout their period of use.

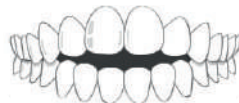




RealAligner can be used to treat all kinds of oral issues



Diastemata



Open bite



Reverse bite



Crossbite



Overbite



Crowding



Midline deviation

For each stage, the patient will use a different set of aligners, which will progressively correct the bite **until the desired final result is achieved.**

How *RealAligner* works

Our **aligners** are designed using the latest technology to offer **predictable, effective and comfortable** invisible orthodontic treatments.

Premium plastic

RealAligner develops its invisible orthodontics devices using a premium material that **retains its strength** and optimises its **flexibility** throughout the period of use of the aligner.

The combined composition of the premium material allows *RealAligner* to correct **aesthetic and functional bite issues**.

- Hard outer layer to withstand functional forces.
- Elastic core to optimise tooth and root movement.

This means that *RealAligner* offers greater **control and flexibility** for treatments, with a product that is as strong and resilient as it is comfortable and efficient for the patient.



More predictable and flexible



Stronger and more resilient



More comfortable and efficient

Flat or scalloped edge

We offer two options for the aligner finish in order to better adapt to the **treatment requirements** and the **needs of each patient**.

Flat edge

Choose straight trim for **greater retention and predictability** of treatment.



More predictable and with improved retention.

Scalloped edge

Choose scalloped edge for **better aesthetics** and for patients with **oral health conditions** such as periodontitis.



More aesthetic and suitable for oral health conditions.



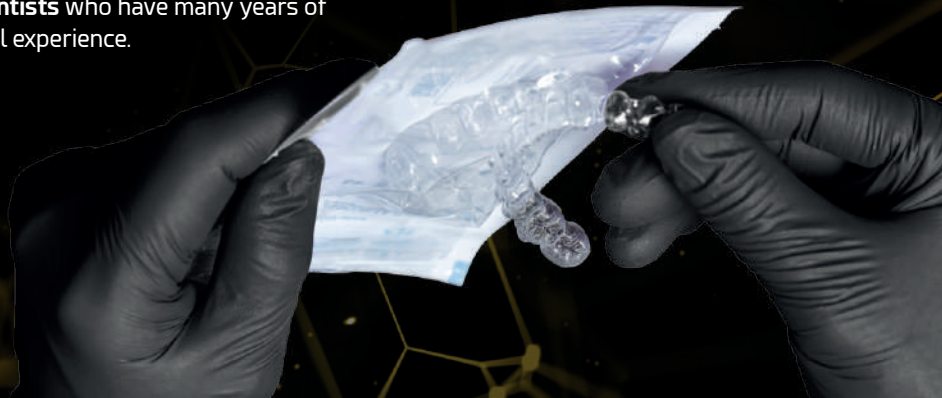
Transparency

Thanks to our digital impression system, we achieve optimal transparency, making our aligners **practically unnoticeable**.

An **aesthetic and discreet treatment** for improved comfort for your patient.

Supervised by orthodontists

We offer **ongoing guidance** throughout the treatment process, which is **supervised by orthodontists** who have many years of professional and clinical experience.



Digital workflow

RealAligner

More efficient processes

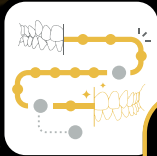
After implementing the digital workflow, you will enjoy much faster and smoother communication with the laboratory, saving you both time and resources.





1 Upload cases via the *RealAligner* platform

You will be able to upload photos, X-rays, STL models and, optionally, CBCT scans.



2 Case analysis and planning

Our planners will analyse the case and create a personalised treatment plan that is best suited to your patient's issue.



3 Receive the personalised case at your dental practice

With the customised preview, you can check that everything is correct before moving forward with the production of the invisible aligner.



4 Accept the case and send the order to *RealAligner*

If everything is correct, you will be able to tell the laboratory immediately.



5 Product fabrication and online tracking of its status

Once the case has been accepted, we will start to create it! You will be able to track its progress at all times.



6 Shipment to your dental practice with the work guide and patient material

Once the aligners for the case are ready, we will send them to your practice along with exclusive *RealAligner* material.

What we offer you

RealAligner is much more than just a product.

We offer an complete service, providing you with everything you need to make invisible orthodontics a new speciality at your dental practice.



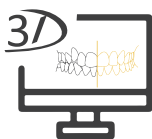
Ongoing orthodontic training

We offer you a training plan tailored to your learning needs so that you can implement our invisible orthodontics system at your dental practice with 100% guarantee. For this purpose, we benefit from a team of influential professionals from the industry who have extensive experience in both clinical practice and in the promotion of new techniques, materials and tools.



Working closely with the dentist

You will receive ongoing advice from our specialists to resolve any issues or queries that may arise throughout the treatment.



We use the most powerful software on the market

Thanks to our customised software, we help you plan each invisible orthodontics case, as well as follow and monitor the entire treatment process in an optimal and simple way.

The advantages of our software:

Predictability

Easily and intuitively monitor the progress of each case.

Flexibility

Plan each of your invisible orthodontics cases in a customised way.

Digitalisation

Digitally store all of your models and comfortably view each stage of the treatment.

Maximum precision and speed

Take virtual measurements of the scanned model to ensure that the treatment is progressing as intended.

Ongoing support throughout the process

Plan each treatment from start to finish and monitor its progress at all times.

Increase trust within the patient-professional relationship

Its intuitive and user-friendly viewer makes it possible to show the patient the procedure to be followed from the very start of treatment, and the expected end result, even before starting the process.

Efficiency

Minimise the number of appointments for your patient.

About Us

RealAligner is a brand from **Ziacor CAD-CAM**, by the group **Ziacom Medical**, which has been working for more than **15 years to improve the oral health and well-being of patients around the world**, by designing and manufacturing innovative, high-quality oral implantology, prosthetic component, surgical instrument and biomaterial solutions.

Thanks to the experience of our prosthetics laboratory, Ziacor, in creating **customised 100% digital prosthetics and solutions**, we launched *RealAligner*, to bring invisible orthodontics to all dental practices.



www.realaligner.com

ENGLISH | EN
Rev-02